

# JOG Mondays / PHRF Wednesdays May 13 - October 16, 2024

## Sailing Instructions

### 1 RULES

1.1 These races shall be governed by the racing rules of sailing

### 2 NOTICES TO COMPETITORS

2.1 Notices to competitors shall be posted on the board inside the LaSalle Mariners Yacht Club clubhouse and on [noticeofrace.net](http://noticeofrace.net)

### 3 SIGNALS MADE ASHORE

3.1 Signals made ashore will be displayed from the flagpole on the RC Tugboat. These will be used for postponement and abandonment of races due to weather and safety concerns.

3.2 If course 10 or 11 will be raced, a VHF announcement on channel 68 will be made and a **PINK** flag will be flown from the RC boat from the time it leaves the shore until it is in position at the start area.

### 4 SCHEDULE OF RACES

JOG SPRING	PHRF SPRING
May 13	May 15
May 21 (Tuesday)	May 22
May 27	May 29
June 3	June 5
June 10	June 12
June 17	June 19
June 25 (Tuesday)	June 26
July 2 (Tuesday)	July 3
July 8	July 10
July 15 - Make up date	July 17 Make up date

JOG FALL	PHRF FALL
August 6 ( Tuesday )	August 7
August 12	August 14
August 19	August 21
August 26	August 28
Sept 3 (Tuesday)	September 4
September 9	September 11
September 16	September 18
September 23	September 25
September 30	October 2
October 7	October 9
October 15 (Tuesday) Make up date	October 16 Make up date

4.1 Races for courses 1-9 are scheduled to start at 18:30. The first warning is scheduled at 18:25.

4.2 Races for courses 10 + 11 are scheduled to start at 18:35. The first warning is scheduled at 18:30.

4.3 To alert boats that the races begin soon, there will be a sequence of 5 horns one minute prior to the warning signal.

### 5 CLASS FLAGS

5.1 The following are the class flag colours and the order in which they will start.

**A Class - Yellow Flag**

**B Class - Green Flag**

**C Class - Orange Flag**

## 6 COURSES

- 6.1** No later than the warning signal, the race committee will designate the course(s) and display them on the bow of the RC boat. If more than 1 course board is displayed, the longer course shall be raced by the A and B class boats and the shorter course shall be raced by the Class C boats.
- 6.2** The course diagrams with descriptions are included in the last pages of this SI. They show the courses, the order in which the marks are to be passed, and the side on which each mark is to be left. The course descriptions are written below each diagram. A mark not designated as a course mark may be passed on either side.

## 7 MARKS

- 7.1** The marks used in these series are the red and green buoys on the Detroit River. They are labelled on each course diagram.

## 8 THE START

- 8.1** Races will be started using RRS 26
- 8.2** The starting line will be between the orange flag on the Race Committee boat and the course side of the Orange starting mark for courses heading South (downriver). For courses heading North (courses 7,8,9) , The starting line will be between the orange flag on the RC boat and the course side of the bifurcation mark.

The following is scheduled each race day once the Race Committee boat is in position. An example of the starting sequence is below.

Time	Visual Signal	Sound
18:24 Race starts in 6 minutes	Orange Flag is visible showing RC boat anchored and in position.	5 consecutive sounds
18:25 Race starts in 5 minutes	Class flag hoisted A-Yellow or B-Green or C-orange (2 orange flags will be shown for C class start)	1 short sound
18:26 Race starts in 4 minutes	“P” Prep flag up Boats are now considered Racing	1 short sound All engines must be off now per RRS definitions: Racing
18:29 Race starts in 1 minute	“P” Prep flag down	1 long sound
18:30 Start of race	Class Flag down	1 short sound

- 8.3** Rolling starts will be used, therefore the warning signal and hoisting of the class flag for each succeeding class shall be made with the starting signal and lowering of the class flag of of the preceding class.
- 8.4** The hoisting and lowering of flags is considered the official time. Sounds and announcements are not considered official time. The Race Committee may make courtesy announcements via VHF radio during the start sequence, when possible.
- 8.5** Boats not engaged in their 5 minute sequence must **STAY OUT** of the start box or starting area. The start box is defined at one end by the starting line and at the other end by channel markers DF15 and DF16 for courses 1-6.  
Any boat that is not considered to be RACING that interferes with a boat that is RACING, may be protested and subsequently disqualified.

## 9 THE FINISH

- 9.1** The finish will be between the blue flag on the RC boat and the course side of the finishing mark.
- 9.2 RRS 32.2** If the course is shortened, the “S” (shortened course) flag shall be hoisted with 2 sounds. The Race Committee will also, when possible, make an announcement on VHF channel 68. The following rounding marks may be used for shortened courses: DF3, DF4, DF6, DF8, DF12. If a shortened course is decided, the RC shall signal as soon as and before the first boat crosses the finish line.
- 9.3** When a course is shortened using a rounding mark, that mark is changed and then designated as an end of the finish line. It is no longer considered a rounding mark. Boats must cross the finish line from the course side, therefore a boat that rounds the mark and crosses the finish line will be scored a DNF, unless it corrects that error and finished from course side. See RRS Definitions: Finish. An example of this would be when racing course 1. If the Race Committee positions itself across from DF3, which is considered a rounding mark in the course, with the “S” (Shortened course) flag hoisted, the finish line would be between the “S” flag on the RC boat and DF3. Racers should not round this mark, and should finish from the course side.

## 10 TIME LIMITS

- 10.1** The time limit for the first boat to start, sail the course and finish shall be 2 hours. (Race time limit.)
- 10.2** The time limit for boats to finish after the first boat starts, sails the course and finishes shall be 10pm ( Finishing window). The RC boat will remain on station until no later than 9pm. A boat finishing after the RC boat has left, is responsible for taking its own time and presenting it to the RC as soon as safely possible, so as not to be recorded DNF.
- 10.3** Boats failing to finish within the finishing window be scored DNF without a hearing. This changes RRS 35, A5.1 and A5.2.

## 11 PROTESTS AND REQUESTS FOR REDRESS.

- 11.1** Hearing request forms are available from the race committee and in the LMYC clubhouse. Protests and requests for redress shall be delivered within 1 hour of the RC boat returning to its berth.
- 11.2** Notices will be posted no later than 30 minutes after the protest time limit to inform competitors of hearings in which they are parties or named as witnesses and where and when the hearings will be held
- 11.3** Notices of protests by the race committee, or protest committee, will be posted to inform boats under RRS 61.1 (b)

## 12 MISCONDUCT

- 12.1** Any boat or its members that breach any part of rule 69.1, whether it be toward another boat or member of the Race Committee, may be protested under rule 69.1 by the Race Committee, or any other boat. See RRS 69.2 (h) for penalties if the protest committee decides that a competitor has broken rule 69.1 (a)

## COURSE 1



Downstream from the start line, leaving the bifurcation mark DGB and Turkey Island to port. Round green spar DF3 to port. Head upstream leaving Turkey Island to starboard and finish between the bifurcation mark DGB to port and RC boat to starboard.

4.46 Nautical Miles

## COURSE 2



Downstream from the start line, leaving the bifurcation mark DGB and Turkey Island to port. Round green spar DF1 to port. Head upstream leaving Turkey Island to starboard and finish between the bifurcation mark DGB to port and RC boat to starboard.

5.43 Nautical Miles

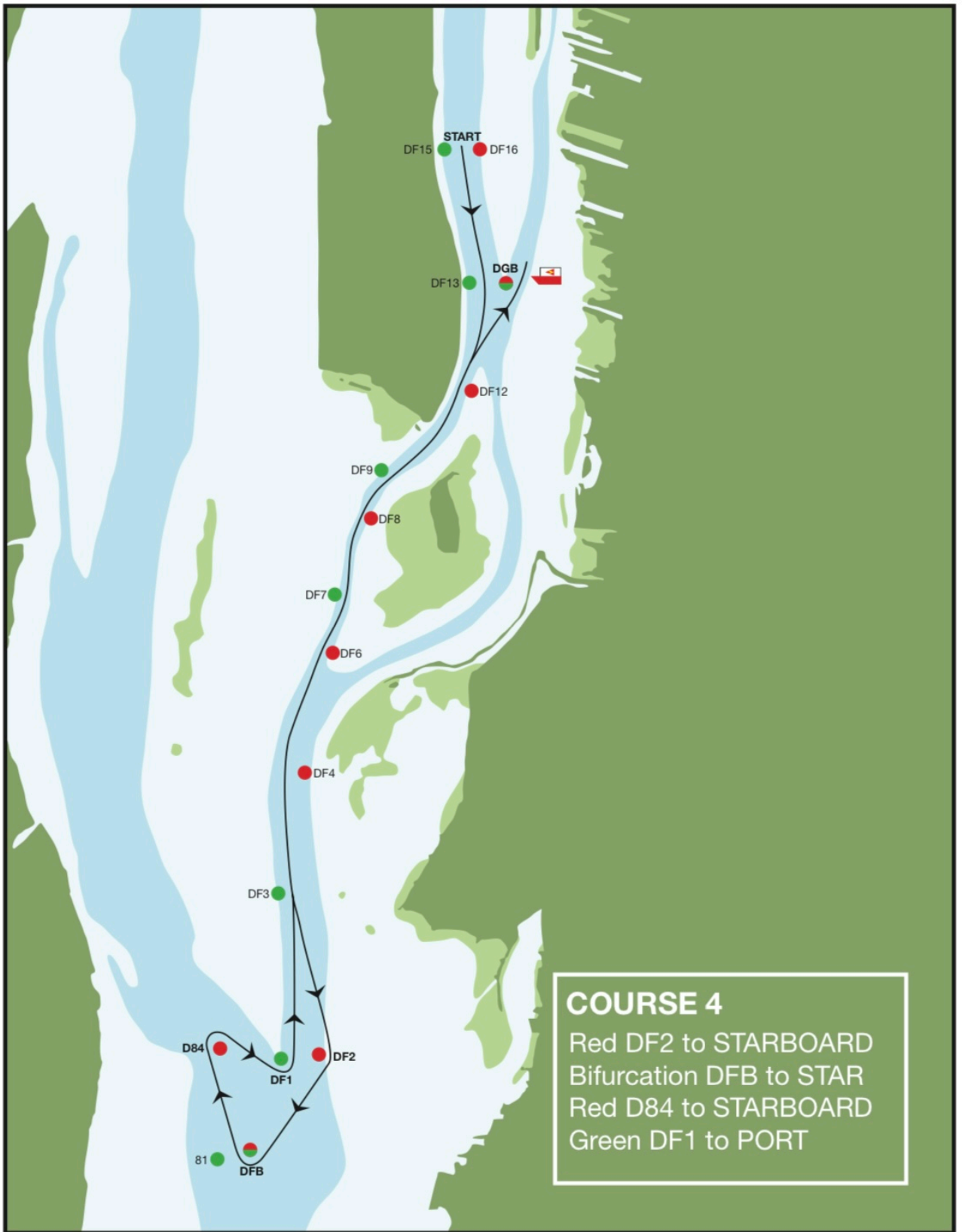
## COURSE 3



Downstream from the start line, leaving the bifurcation mark DGB and Turkey Island to port. Round green spar DF1 to starboard, red nun D84 to port, red/green structural buoy DFB to port, red spar DF2 to port. Head upstream leaving Turkey Island to starboard and finish between the bifurcation mark DGB to port and RC boat to starboard.

6.37 Nautical Miles

## COURSE 4



Downstream from the start line, leaving the bifurcation mark DGB and Turkey Island to port. Round red spar DF2 to starboard, red green structural buoy to starboard, red nun D84 to starboard, round DF1 to port. Head upstream leaving Turkey Island to starboard and finish between the Bifurcation mark DGB to port and RC boat to starboard.

6.37 Nautical Miles

## COURSE 5



Downstream from the start line, leaving the bifurcation mark DGB and Turkey Island to port. Round red spar DF6 to port. Head upstream leaving Turkey Island to starboard and finish between the bifurcation mark DGB to port and RC boat to starboard.

2.95 Nautical Miles



## COURSE 6

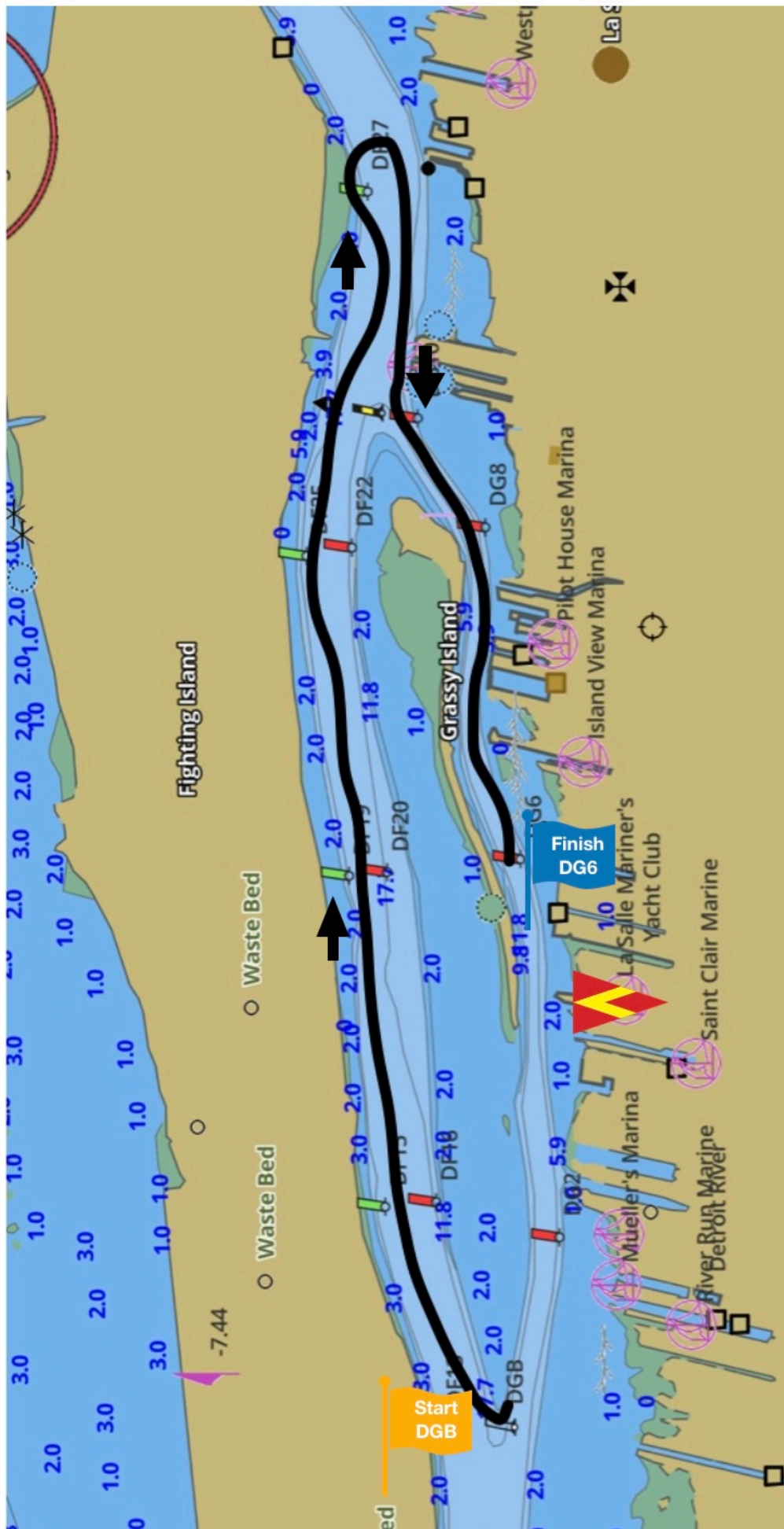


Downstream from the start line, leaving the bifurcation mark DGB and Turkey Island to port. Round red spar DF2 to port. Head upstream leaving Turkey Island to starboard and finish between the bifurcation mark DGB to port and RC boat to starboard.

**5.43 Nautical Miles**

# SAILING INSTRUCTIONS

## COURSE 7



Start at DGB

Head upriver on the West Side of grassy island to DF27

Round DF27 to Starboard

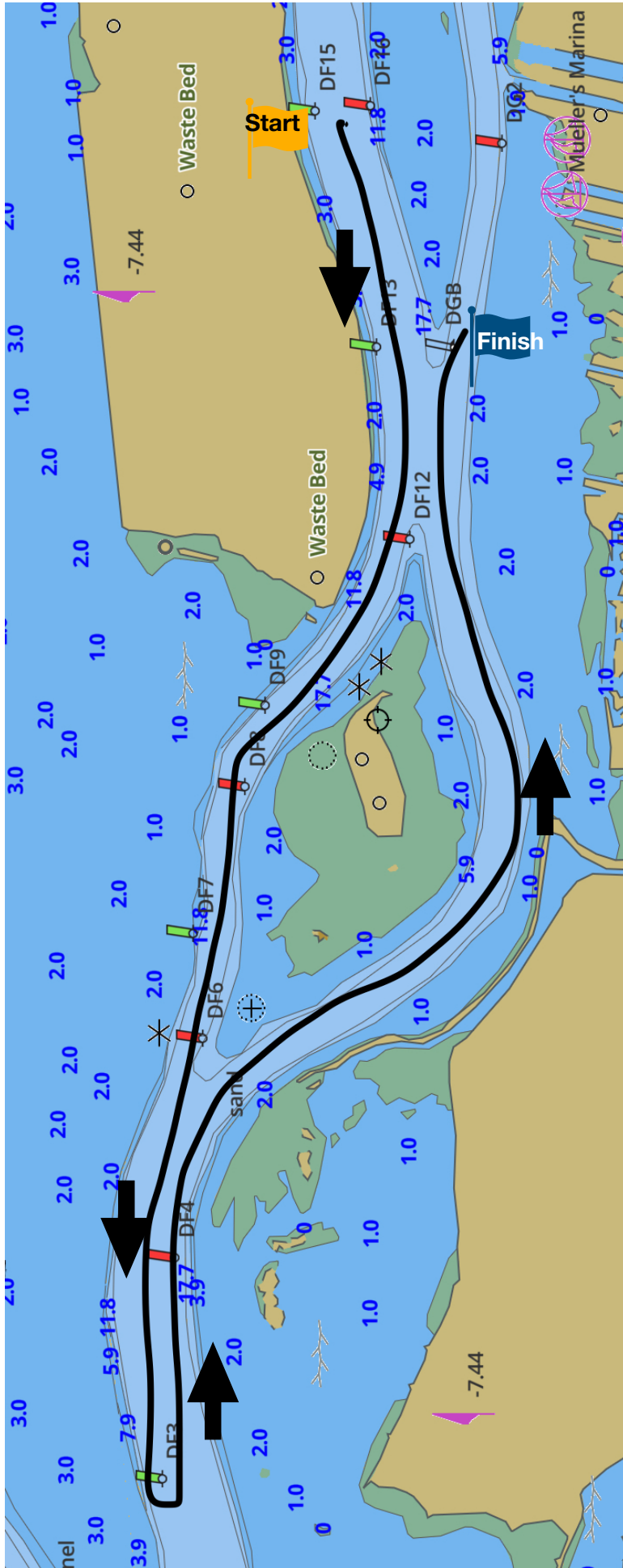
Head Downriver on the East side of Grassy Island

Finish at DG6

**3.65NM**

# SAILING INSTRUCTIONS

## COURSE 8



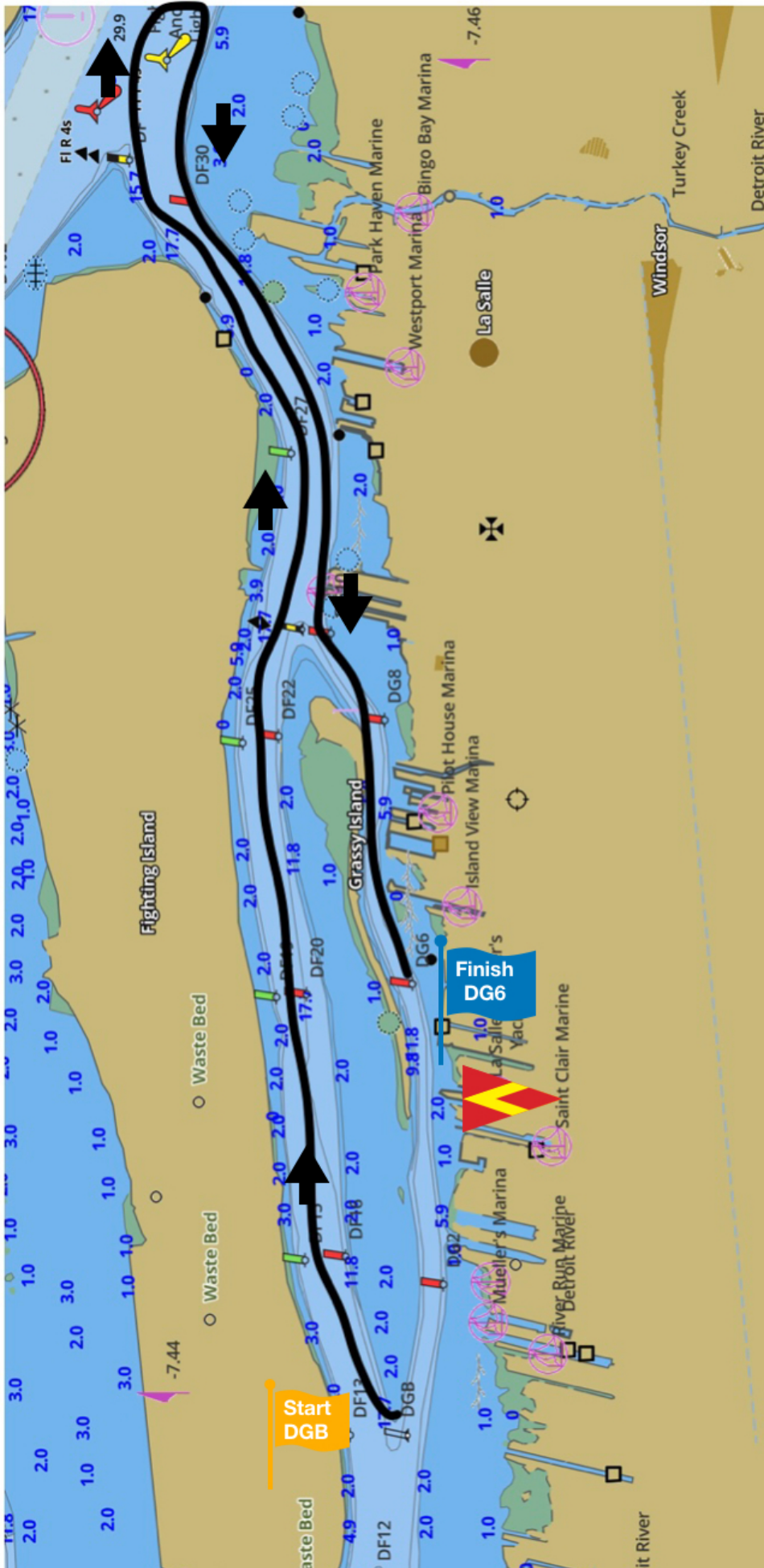
Head downstream from the the start line leaving DGB and Turkey Island to Port.

Round DF3 to port and head upstream and leave Turkey island to PORT and head to the finish line between the RC boat and DGB.

**4.66NM**

# SAILING INSTRUCTIONS

## COURSE 9



Start DGB

Head upriver on the West side of Grassy Island and Fighting Island to DQ ( Fighting Island anchorage area lighted buoy)

Round DQ to Starboard.

Head downriver on the East side of fighting island then the east side of grassy Island to finish at DG6

**5.55NM**

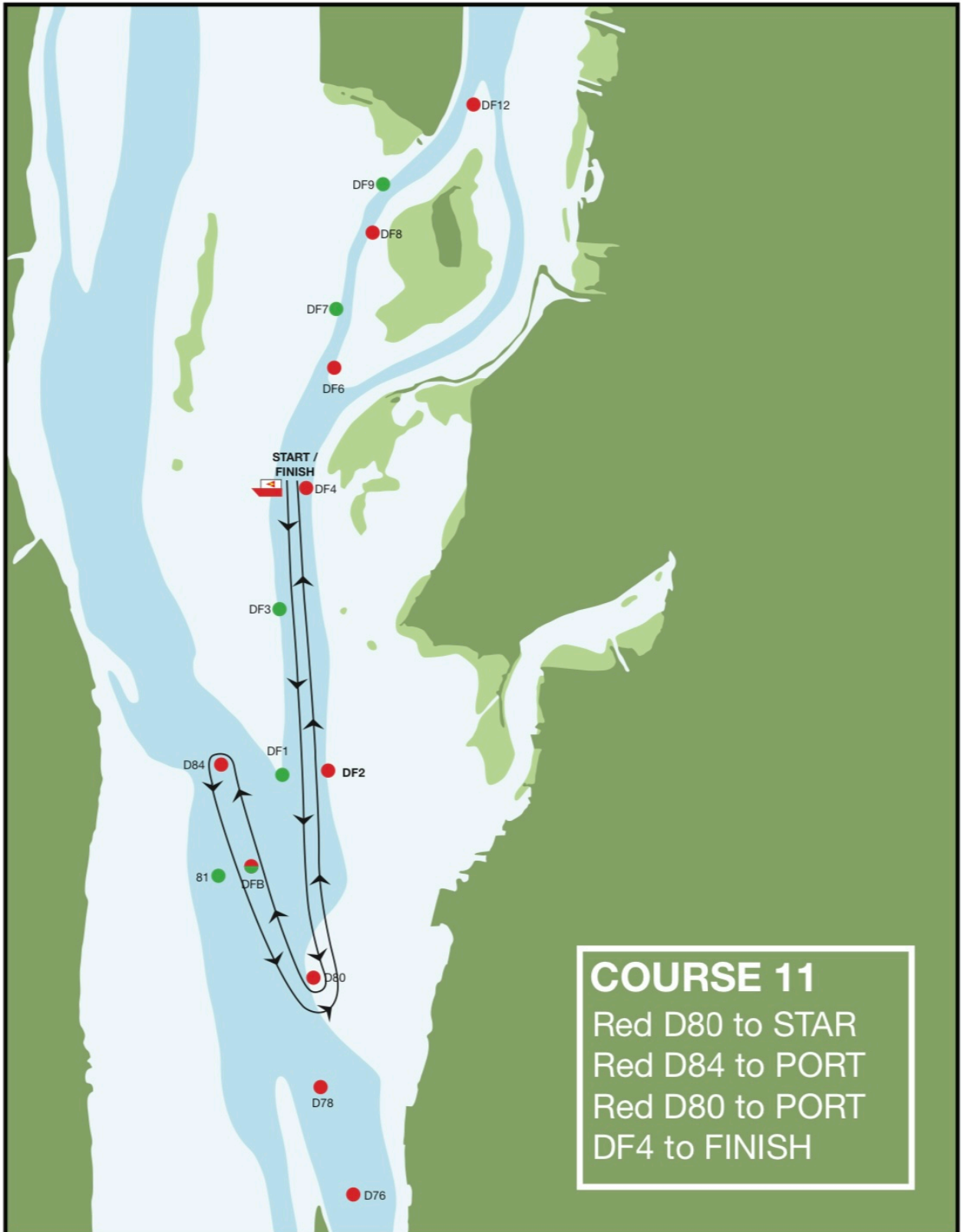
## COURSE 10



Start at DF4, rounding D78 to port, upriver to DF1, rounding to port, return down river to D78 rounding to port, return to finish at DF4 and RC Boat.

6.38 Nautical Miles

## COURSE 11



Start at DF4, rounding D80 to starboard, upriver to D84, rounding to port, return down river to D80 rounding to port, return to finish at DF4 and RC Boat. Be advised that the bifurcation mark for the main channel and Fighting Island is in between D80 and D84.

**4.72 Nautical Miles**

Alternate finish at DF8 for the maximum race opportunity of 5.55NM if RC extends course based on wind.